

# THE MEDIAL WOMEN

LEANNE OLIVIER

The medial woman stands  
between the worlds of  
consensual reality and the  
mystical unconscious and  
mediates between them

...between worlds of  
reason and image,  
between feeling and  
thinking, between matter  
and spirit - between all  
opposites and all shades  
of meaning one can  
imagine - that is the home  
of the medial woman

- Clarissa Pinkola Estes





I invite you  
into my world;  
my liminal  
space and  
knowing -  
the place  
where these  
artworks were  
created.

They stand  
betwixt &  
between the  
sacred and the  
mundane  
...where all  
things lie;  
But only some  
have the eyes  
to  
see.







# LIFE-DEATH-LIFE

The Medial Nature speaks to that essential knowing which resides within all sentient beings; an intrinsic understanding of the cyclical nature of things.

My language for expressing this nameless potential is through bones, ash, clay and hematite: A return to substance, from whence we came.

I re-create a world where the shamanic / ritual / ceremonial site may be experienced without the precursory words bound by historical assumptions. It is an inclusive and universal experience that expresses itself when the Life-Death-Life process is allowed. In the small everyday ways...in the life-altering ways.

In this way we are co-existent collaborators and artists. A mirror is held up. What do you create in your Knowing of this encounter?









LIFE DEATH LIFE

2020  
Hematite and oil on canvas  
130x100cm (Black frame)





BEHOLD, I MAKE ALL THINGS NEW

2020  
Hematite and oil on canvas  
100x100cm (Black frame)







SHE RETURNS

2020  
Hematite and oil on canvas  
200x130cm (Black frame)







LA QUE SABE (SHE WHO KNOWS)

2020  
Hematite and oil on canvas  
130x100cm (Black frame)





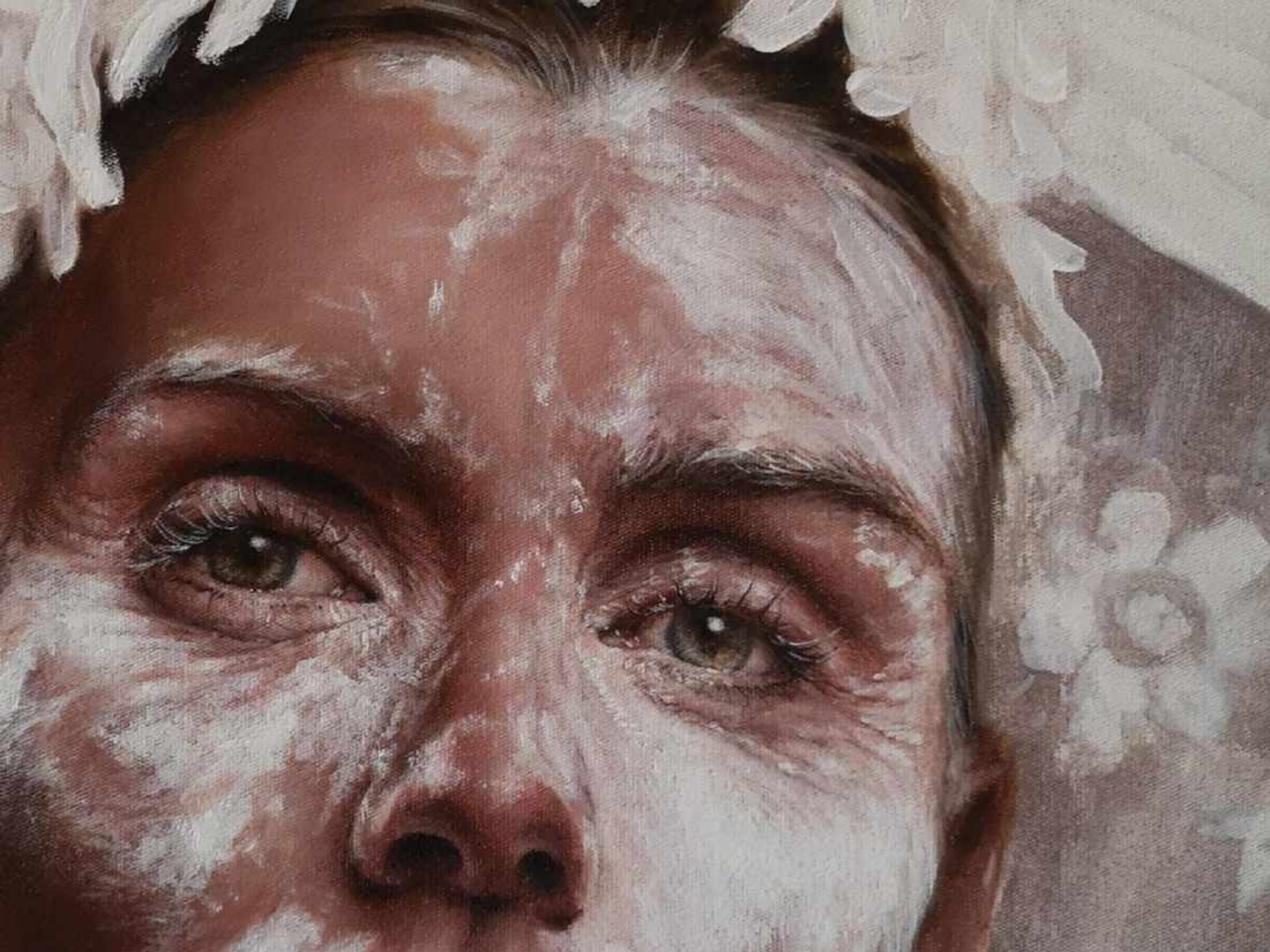


BONE AND FLOWER WREATH

2020  
Hematite and oil on canvas  
130x100cm (Kiaat frame)





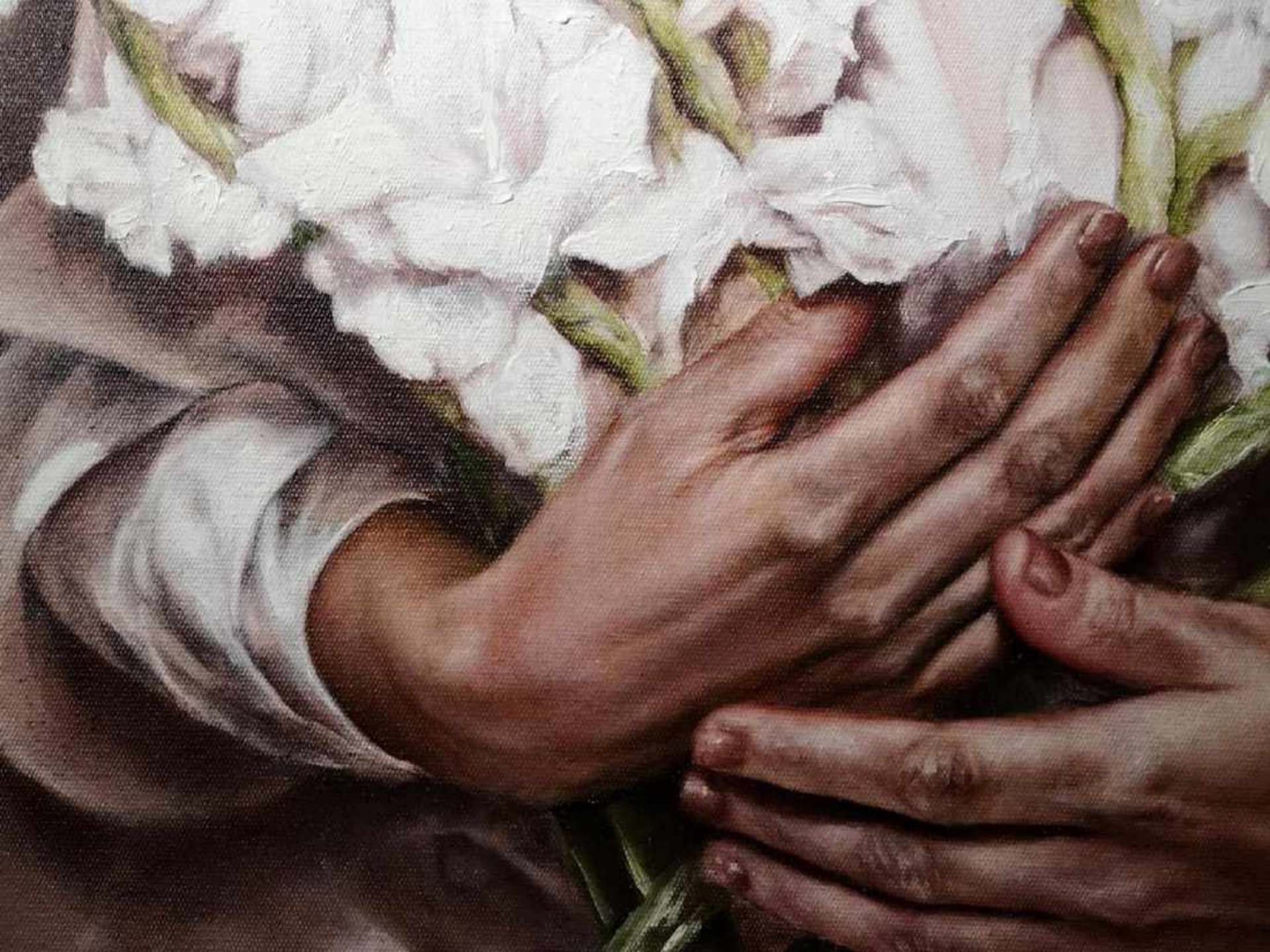


CASCADE OF ASHES

2020  
Hematite and oil on canvas  
160x110cm (Kiaat frame)







OPHELIA AWAKENS

2020  
Hematite and oil on canvas  
91X61cm (Kiaat frame)





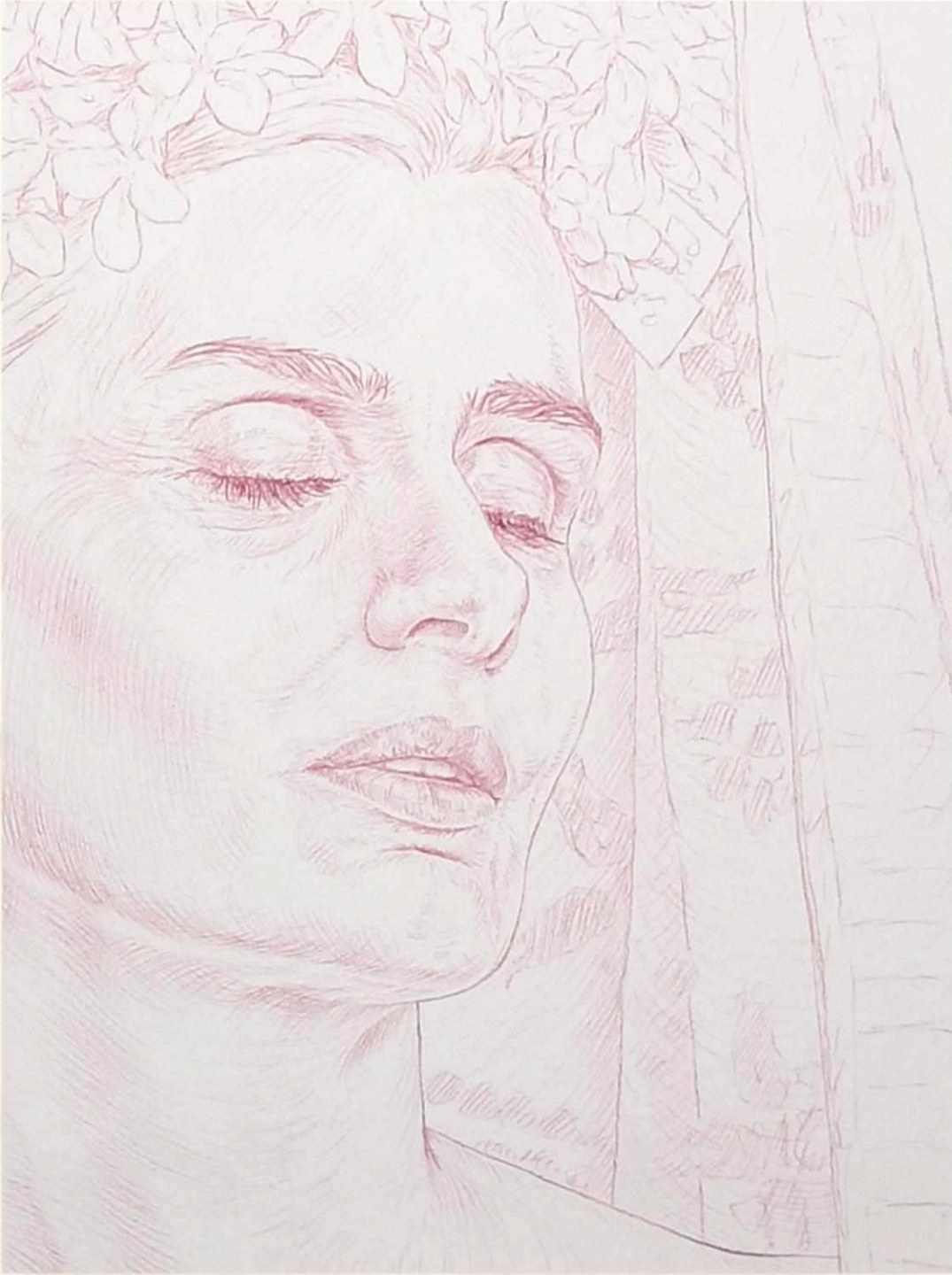


RIVER-BENEATH-RIVER

2020  
Hematite and oil on canvas  
76x76cm (Kiaat frame)







STUDY: CASCADE OF ASHES

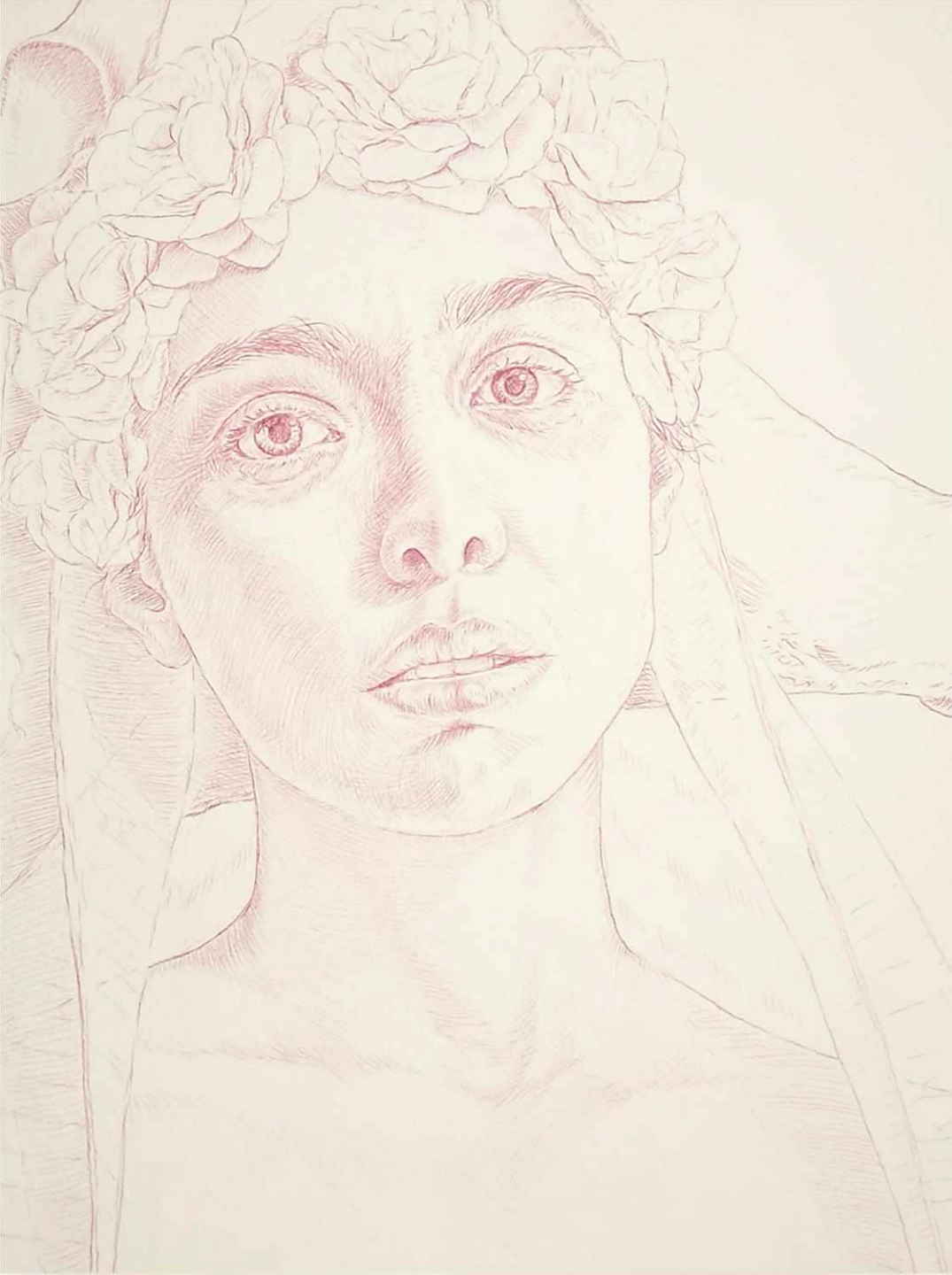
2020  
Crimson pigment pencil on Hahnemuhle  
94x68cm (Kiaat frame)



STUDY: BONE BOUQUET

2020  
Burnt Carmine pigment pencil on Hahnemuhle  
94x68cm (Kiaat frame)





STUDY: BONE AND FLOWER WREATH

2020  
Burnt Carmine pigment pencil on Hahnemühle  
94x68cm (Kiaat frame)





## STUDY: BONE BOUQUET

2020  
Shiraz pigment pencil on Hahnemuhle  
50X35cm (Kiaat frame)







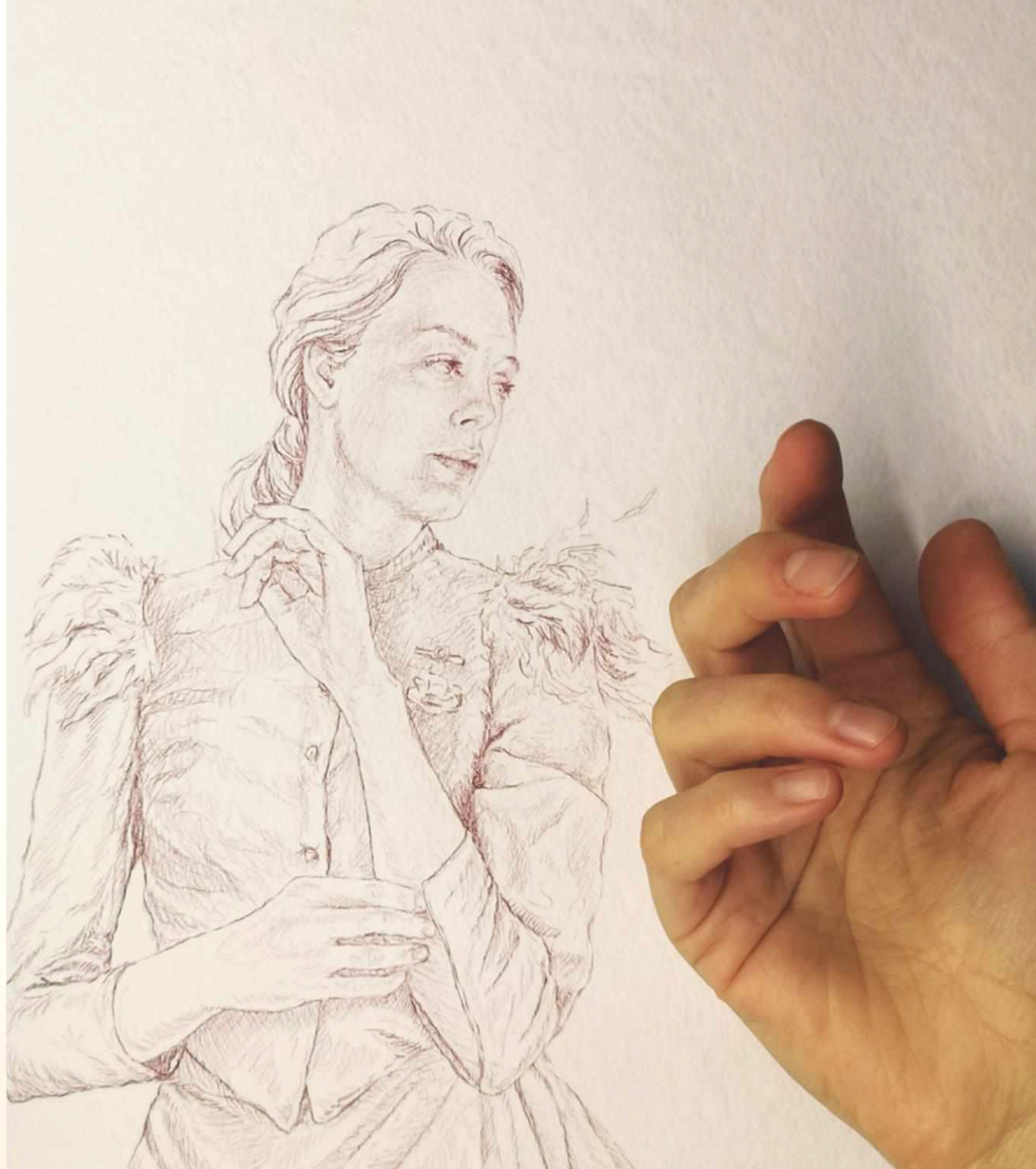
STUDY: BONE CROWN

2020  
Shiraz pigment pencil on Hahnemuhle  
50X35cm (Kiaat frame)



STUDY: SHE RETURNS

2020  
Shiraz pigment pencil on Hahnemuhle  
50X35cm



THANK YOU

Thea Opperman, Caitlin Greenberg,  
Dan Bakkes, Jenna Burchell, Sanette  
Olivier, Andrea Reagon, Cow Mash,  
Adriaan Esterhuizen, Harm Esterhuizen,  
Bernard Brand, Christo Niemandt, Anton  
Opperman